

RecordLink Writer INSTALLATION NOTES

Thank you for purchasing RecordLink Writer. Here are some instructions to get you started. Further information and downloads are available from www.RecordLink.IT.

For licence renewals follow instructions for LICENCE RENEWAL & REACTIVATION

CONTENTS

OVERVIEW

FINDING YOUR PRODUCT KEY

SHORT INSTRUCTIONS

- FRESH INSTALLATION
- LICENCE RENEWAL AND REACTIVATION

DETAILED INSTRUCTIONS

- FRESH INSTALLATION
- LICENCE RENEWAL AND REACTIVATION

GENERAL NOTES

- SYSTEM REQUIREMENTS
- INSTALLING UPDATES
- FAQs

OVERVIEW

RecordLink Writer consists of two elements. First, RecordLink Manager which is installed on the SIMS Server. This element must be registered on-line with your Product Key, after which it governs the availability of licences to the second element, RecordLink Writer. This is installed on end-user PCs that are networked to the same SIMS server. RecordLink Writer is the functional software that allows the end users to integrate MS Office with SIMS.

FINDING YOUR PRODUCT KEY

IMPORTANT: Your Product Key will be emailed to the address provided to your reseller at the time of purchase and copied to the technical contact at your school (The Product Key is provided in the format RW-123456-123456). You will need the key to activate you RecordLink products.

SHORT INSTRUCTIONS

FRESH INSTALLATION

To get started with RecordLink Writer you will need to follow some instructions which are listed in detail below this summary. In general, RecordLink Writer consist of a Manager that is installed on the SIMS server and RecordLink Writer for installation on networked PCs and laptops. The Manager needs to be activated. Downloads and updates are free of charge to licensed users.

1. **Register** your details on <http://RecordLink.it/index.php?page=register> .
2. **Sign in** using the email address that you used during the registration process with your chosen password.
3. **Download RECORDLINK Manager** from <http://RecordLink.it/index.php?page=download> and install it on your SIMS server. **Choose 32-bit or 64-bit to match MS Office, not the OS.**
4. **Activate RECORDLINK Manager** on <http://recordlink.it/Activate> . For this you will need the Product Key shown above and the Hardware Key taken from your installed RecordLink Manager.
5. **Download RecordLink Writer** from <http://RecordLink.it/index.php?page=download> and install it on the SIMS client PCs on which you wish to use the software.
6. **Set the manager service to restart in all three instances.**

You are then ready to go with user tips at <http://RecordLink.it/index.php?page=faq-RecordLink-writer>.

LICENCE RENEWAL AND REACTIVATION

1. Check the manager is up to date at <http://RecordLink.it/index.php?page=download> and update if necessary by removing the old version then running the latest msi.
2. If keeping the old manager delete the entries in the manager for Licence key and Activation key.
3. Follow step 4 above. There is no need to make changes to the SIMS client software unless a later version is available.

DETAILED INSTRUCTIONS

FRESH INSTALLATION

1. REGISTER

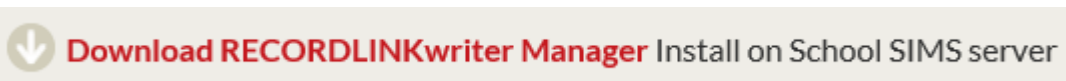
You need to register to sign-in and then download and activate your software. We need your details to keep you up to date with new releases that keep you in step with changes in SIMS. We will not pass on any details to third parties and will not bombard anybody with unwanted information. To register, fill in the form at <http://RecordLink.it/index.php?page=register>.

2. SIGN IN

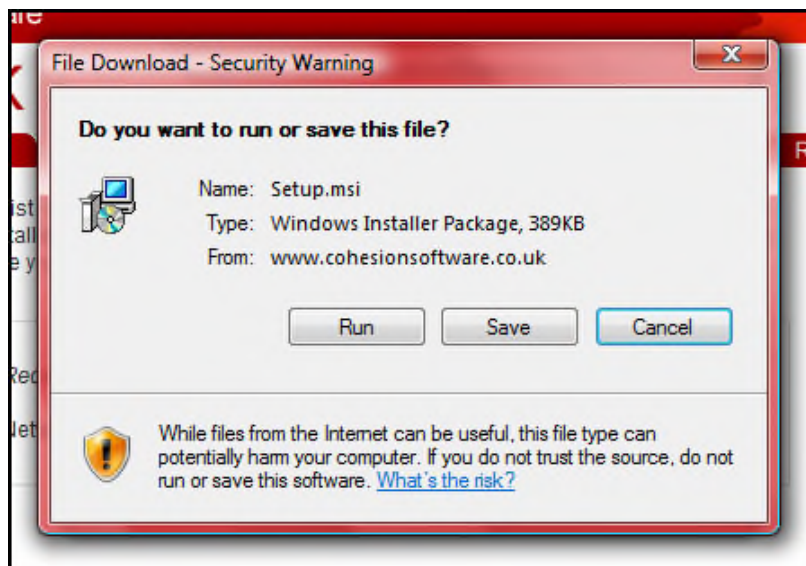
You will be prompted to sign into the website at the first visit to the download or activation pages in each session. You need to sign-in before you can download and activate your software for the first time. Simply enter your details credentials as prompted using the email address that you supplied during registration and your chosen password. If you have not signed out since registration you can carry on straight away.

3. DOWNLOAD & INSTALL RECORDLINK Manager

Download RecordLink Manager from <http://RecordLink.it/index.php?page=download> by clicking on this link;



In the following pop-up you can choose to Run the installer or Save it to a location to run it later.

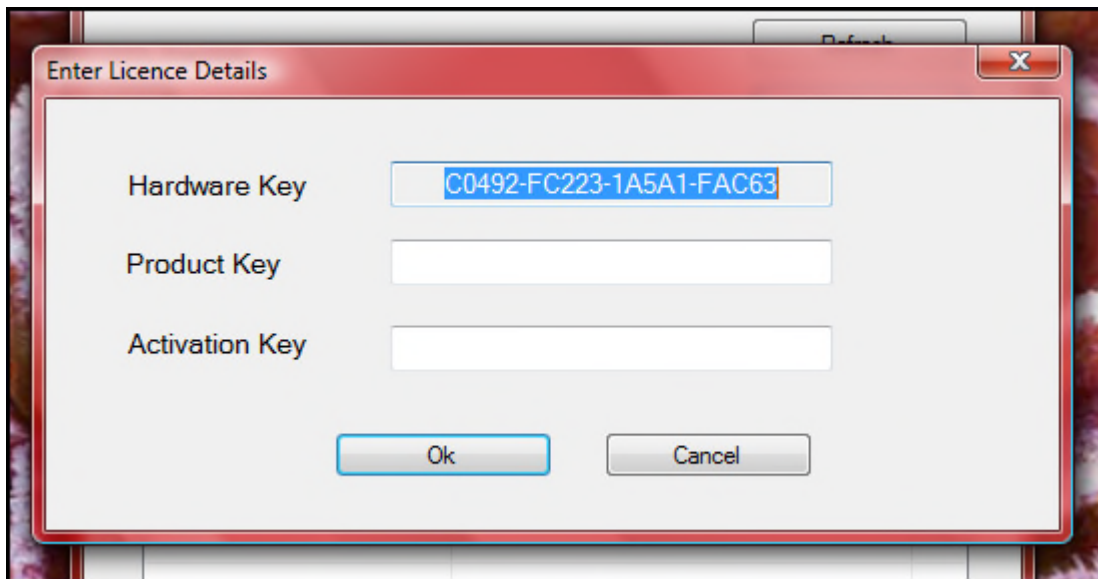


This application *must* be installed on the SIMS server. Local administrator privileges are required. Please contact your SIMS support team or your network manager if you are unsure.

4. ACTIVATE

You will need to enter the Hardware Key taken from the installed RecordLink Manager and the Product Key taken from your original email from RecordLink. This will give you an Activation Key to paste into the RecordLink Manager that will activate it.

To Find the Hardware Key open RecordLink Manager. Navigate to the manager from the C:\Program Files\Cohesion Software Ltd\RecordLink Manager. **Right click the manager and Run as Administrator.** Select 'Configure' which will open the activation screen;



- Copy the Hardware Key and go to <http://recordlink.it/Activate>.
- Paste in the Hardware Key in the field marked Hardware Key.
- Copy the Product Key from your email and paste it into the website field marked Product Key.
- Paste the same Product Key into the Manager field marked Product Key.
- On the website select Activate. This will return an Activation Key.
- Copy the Activation Key and paste it into the Manager.
- Select OK to activate.

5. DOWNLOAD & INSTALL RecordLink Writer

You can install RecordLink Writer on as many SIMS client PCs as you wish.

RecordLink Writer is available from <http://RecordLink.it/index.php?page=download>. Local administrator privileges are required. **Select the 32-bit/64-bit download according to your flavour of MS Office, not the operating system.**

↓ **Download RECORDLINKwriter** Install on end user client PCs running 32bit MS Office

↓ **Download RECORDLINKwriter (x64)** Install only on client PCs running 64bit MS Office

In the following pop-up you can choose to Run the installer or Save it to a location to run it later.



To install on the PC you are using hit Run. If you are prompted, allow the software to run if you have authorisation to do so on your network.;

To install on other PCs select Save and browse to your chosen location. You will need to transfer the saved file to the other PCs or install with group policy.

You will be taken through a wizard that is self-explanatory. During this process you can choose to change the folder for installation. We recommend that you do not change this folder unless you are sure of what you are doing.

If you do not have the correct permissions or authority you will need to contact your network administrator. RecordLink Writer will not function before the Manager is installed and activated and SIMS must be loaded on the PC for RecordLink Writer to function.

6. LICENCE RENEWAL AND REACTIVATION

To reactivate RecordLink writer with a new licence key just go through section 4 ACTIVATE. It is worth checking the manager is the latest version available.

7. HOUSEKEEPING

Set the manager service to restart in all three instances. To do this go to Control Panel/System and Security/Administrative Tools and select Services. Right click on RecordLink Manager. Select Properties then Recovery. Set all three instances of action on failure to Restart the Service. This will ensure the manager service runs.

If you experience problems with RecordLink Writer it is always worth checking the service is running and restart if not.

GENERAL NOTES

SYSTEM REQUIREMENTS

You will require the following system elements before installing RecordLink Writer:

- Currently supported SIMS server and workstation components
- Microsoft Office
- Microsoft .Net Framework 2 or newer

INSTALLING UPDATES

We will contact all forum members with details of new releases by email.

You can freely download the latest versions of RecordLink Writer at any time. **IMPORTANT: Before you install a new version it is necessary to remove the previous version using ADD & REMOVE PROGRAMS.**

You can add, remove or update RecordLink Writer on client PCs at any time without doing anything to the manager.

Before updating the manager take a copy of the Product Key and Activation Key. Once the new manager has been installed you can reactivate just by pasting these values back in.

FAQs

For updated technical and end user notes please visit <http://recordlink.it/faqs/faqs-recordlink-writer> .

Last updated 20/09/18